



DV90

# MAGNETIC DRYER VENT COUPLING



## USER GUIDE

www.voxwelly.com  
support@voxwelly.com  
(888) 897-8739

(Monday to Friday, 8:00 am to 7:00 pm PST)

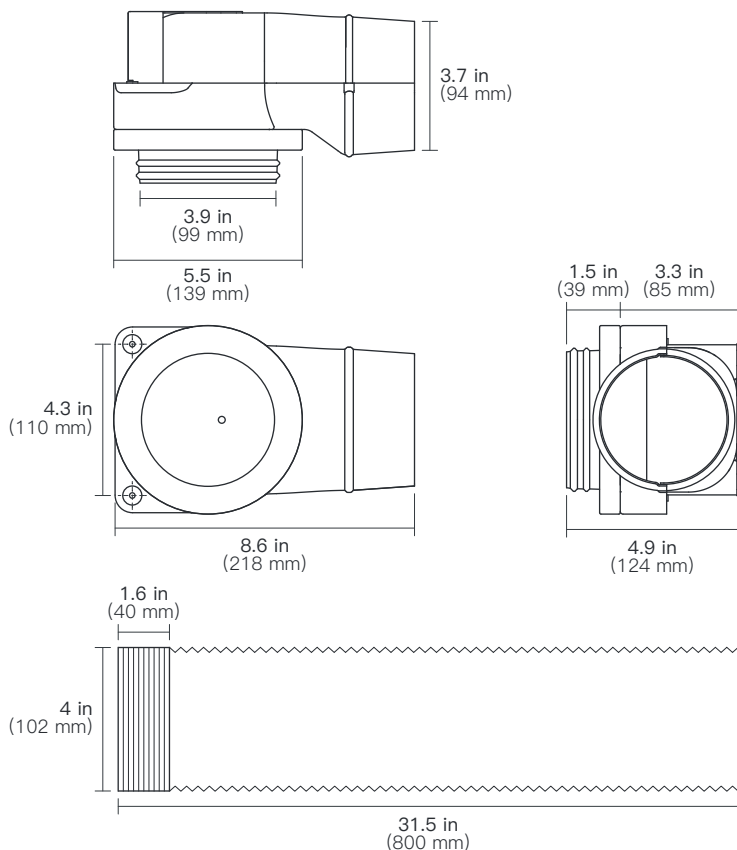
## WARNING

- Please refrain from playing with the powerful magnets. There is a risk of injury from pinching.
- Wear gloves when handling. Keep hands, body, clothing, jewellery, tools, and debris free from mating magnetic surfaces.
- The magnet could cause damage to electronic devices and potentially erase magnetic storage medium.

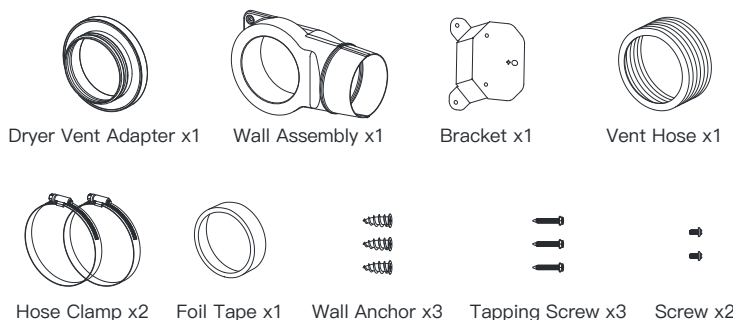
**Pacemaker Warning:** Strong magnets in close proximity have been known to interfere with some types of pacemakers with potentially fatal consequences. Consult a physician for precautions when handling powerful magnets.

**Disclaimer:** If you are in any doubt about your ability to install this equipment or its suitability for your particular installation, seek the advice of a qualified professional.

## DIMENSIONS



## ACCESSORIES



## INSTALLATION

### Installation overview:

1. Measure and mark the center of the dryer port on the wall.
2. Mount the bracket and wall assembly to the wall, then connect the duct path using rigid metal duct pipe.
3. Install the dryer vent adapter onto the dryer exhaust port.
4. Position the dryer vent adapter adjacent to the wall assembly. The powerful magnet will autonomously align and establish a sealed connection.
5. Slide the dryer into position, perform a visual inspection to confirm the seal is secure, and complete the installation.

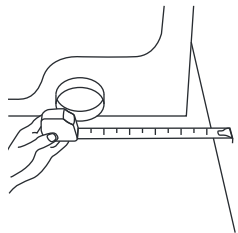
# INSTALLATION

**Prerequisites of Install:** Dryer vent path turns 90 degrees directly behind dryer either up, down, left or right.

Dry wall should already be hung.

(Additional Requirements: Enough 4 inch rigid metal pipe, pipe strapping and elbows for your specific installation needs.)

**Tools Required:** Tape measure, pencil, screwdriver or screw gun, tin snips, safety glasses, gloves, AC voltage sensor.

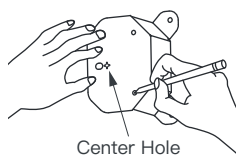


## Step 1:

Unplug the dryer and remove the existing transition duct if necessary.

Measure the dryer port center from flush side of the dryer and vertically from the floor, then mark these measurements on the wall.

**Note:** The flush side of the dryer is the side designed to be flush with a countertop or adjacent washing unit. The side of the dryer installed against a wall will typically have a baseboard gap at the top. For most freestanding dryers, the center of the exhaust port is located 6" (15.2cm) off the floor near the unit's midpoint. However, always verify this measurement on your specific appliance. Account for the baseboard offset if applicable.

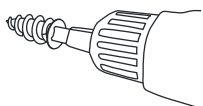


## Step 2:

Align the center hole of the mounting bracket to the wall's center mark, ensuring its open end faces the vent path direction. Secure its position and mark the three screw holes locations on the wall using a pencil or an awl.

If baseboard interference occurs, adjust the bracket to align flush with either the drywall surface or the baseboard.

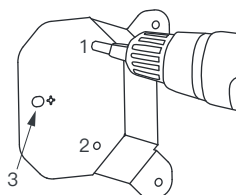
**Note:** In certain installations, partial removal or notching of the baseboard may be required for optimal alignment.



## Step 3:

If the bracket is installed on drywall, secure it using the included self-tapping wall anchors at the pre-marked locations. If the bracket is positioned on a baseboard or solid wood surface, proceed to Step 4.

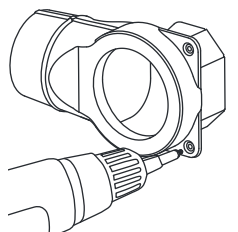
**WARNING:** Before drilling or installing fasteners into drywall, always verify the absence of live electrical wiring using a non-contact voltage detector.



## Step 4:

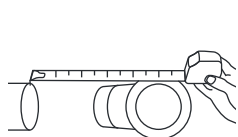
Secure the bracket in position and fasten the included tapping screws through the bracket screw holes into the pre-installed wall anchors. If installed on a solid wood surface, fasten the tapping screws directly into the wood.

**Note:** First tighten screws 1 and 2 in this step, then tighten screw 3 in Step 5.



## Step 5:

Secure the wall assembly to the bracket using the included screws, and tighten the screw 3.



## Step 6:

Measure the measurements for the remaining duct system components, connect the duct system using rigid metal ductwork according to the measured specifications. During this process, the wall assembly can be temporarily removed.

## Step 7:

Securely attach the flexible duct to the dryer exhaust port using supplied hose clamp and extend hose with a slight tug.



## Step 8:

Position the dryer vent adapter adjacent to the wall assembly. The powerful magnet will autonomously align and establish a sealed connection. Visually confirm the seal integrity and slide the dryer into position to complete the installation.

