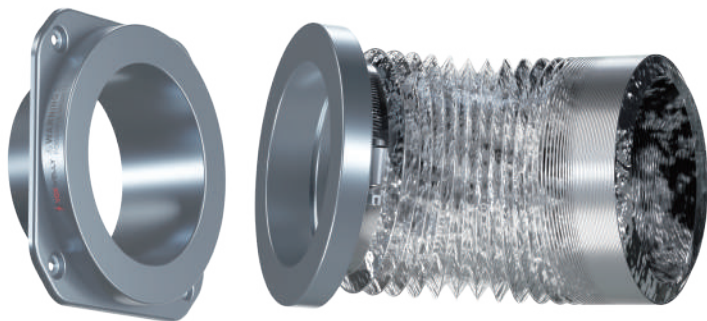




DV180

# MAGNETIC DRYER VENT COUPLING



## USER GUIDE

www.voxwelly.com  
support@voxwelly.com  
(888) 897-8739

(Monday to Friday, 8:00 am to 7:00 pm PST)

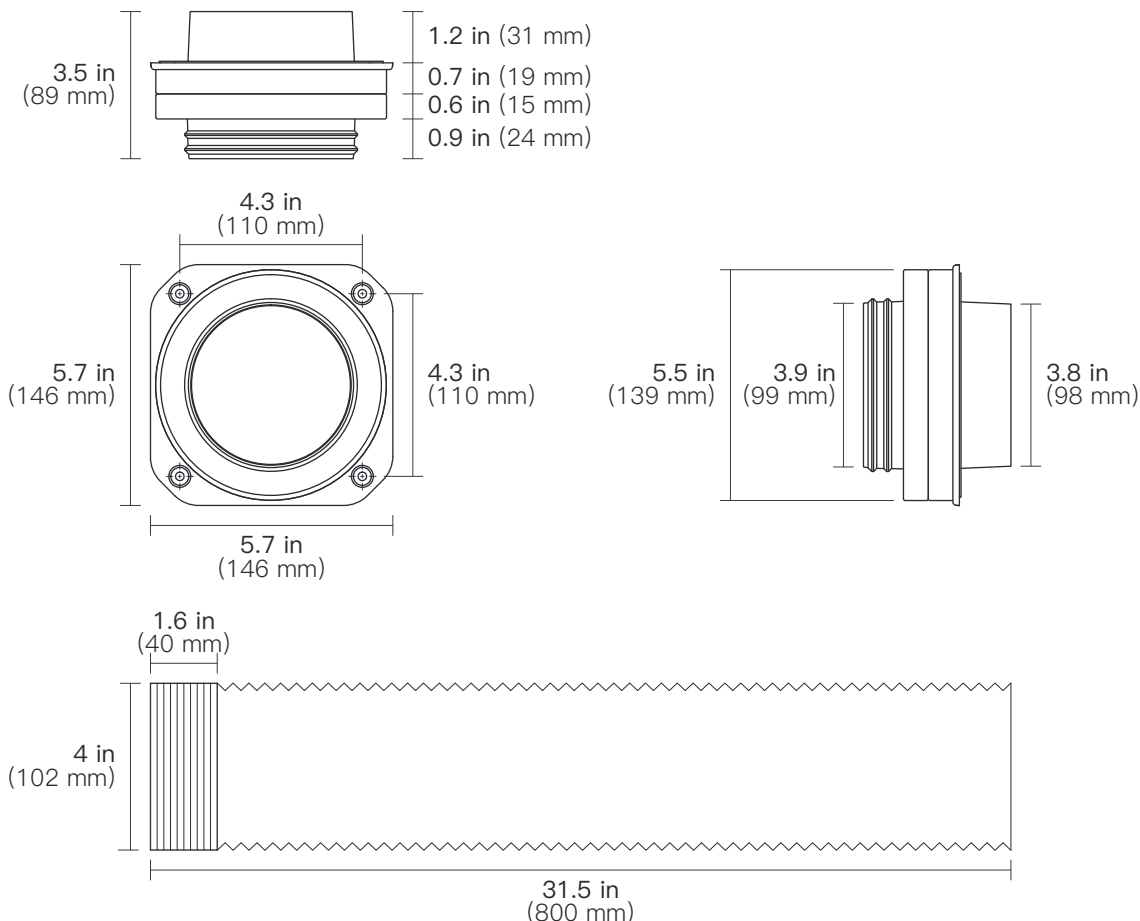
## WARNING

- Please refrain from playing with the powerful magnets. There is a risk of injury from pinching.
- Wear gloves when handling. Keep hands, body, clothing, jewellery, tools, and debris free from mating magnetic surfaces.
- The magnet could cause damage to electronic devices and potentially erase magnetic storage medium.

**Pacemaker Warning:** Strong magnets in close proximity have been known to interfere with some types of pacemakers with potentially fatal consequences. Consult a physician for precautions when handling powerful magnets.

**Disclaimer:** If you are in any doubt about your ability to install this equipment or its suitability for your particular installation, seek the advice of a qualified professional.

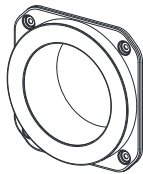
## DIMENSIONS



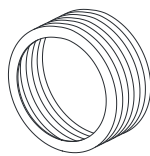
## ACCESSORIES



Dryer Vent Adapter x1



Wall Assembly x1



Vent Hose x1



Hose Clamps x2



Wall Anchors x4



Screws x4

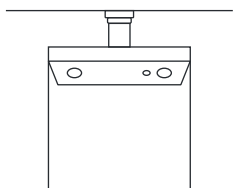
## INSTALLATION

**Prerequisites of Install:** Dryer vent path must continue straight behind dryer or within 8 inches of alignment.

Dry wall should already be hung.

(For new installations you may need a dryer exhaust wall boot.)

**Tools Required:** Tape measure, pencil, screwdriver or screw gun, tin snips, safety glasses, gloves, AC voltage sensor.

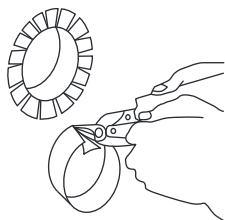


### Step 1:

Look behind the dryer and ensure that the dryer exhaust and wall exit point are reasonably aligned within 8 inches.

### Step 2:

Unplug the dryer and remove any existing duct system if necessary.



### Step 3:

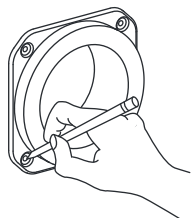
Cut the end of the duct system approximately flush with the wall surface or notch and bend if necessary.

### Step 4:

Hold the wall assembly to the wall centred around the wall exit point and mark the screw hole on the wall.

### NOTE:

Some installations may benefit from notching or removing the baseboard.

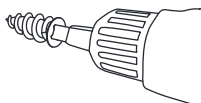


### Step 5:

If the wall assembly is on drywall, screw the supplied self-tapping wall anchors into the drywall at the marked locations. If the wall mounting location is on the baseboard or other wood surface, proceed to step 6.

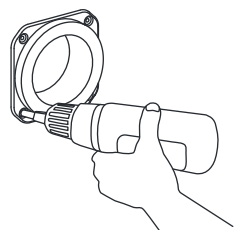
### WARNING!

Always check for live wires with the AC sensor before driving screws into the drywall!



### Step 6:

Hold the wall assembly in position and drive the supplied fixing screws through the bracket hole and into the wall anchors. If on a wooden surface, drive the screws directly into the wood.

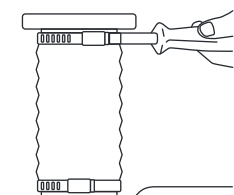


### Step 7:

Use the supplied hose clamps to secure each end of the hose to the dryer exhaust port and dryer exhaust adapter.

### Step 8:

Plug the dryer in and push it into position, allowing the powerful magnets to self-align and complete the duct connection.



### Step 9:

A quick visual inspection to check for proper sealing and you are done!

### NOTE:

Use a mirror and torch if necessary in confined spaces.